

Winneshiek County, Iowa

Timed Online

# LAND RENT AUCTION

Selling Cash Rent Contracts for the 2020 & 2021 Farming Seasons.

**516±**  
acres offered in  
2 Tracts

**A rare opportunity to increase the size of your farming operation.** Over 516 acres of land up for cash rent in this timed online auction. View [SteffesGroup.com](http://SteffesGroup.com) for complete information.

## TRACT #1 – 301.75 ACRES

**FSA indicates:** 301.75 acres tillable  
CSR2 rating of 67.3

Located in Section 7 of Burr Oak & Section 12 of Freemont Township, Winneshiek County, Iowa  
USDA Farm No. 8485 Tract 3784, Fields 1, 2, 3, 4, 7 and USDA Farm No. 8485 Tract 3785, Fields 1, 2, 3, 4, 5, 6, 7, 8, 9, 10, 11, 12, 13, 17 according to FSA farm maps.

**Possession:** March 1, 2020

## TRACT #2 – 214.89 ACRES

**FSA indicates:** 214.89 acres tillable  
CSR2 rating of 67.9

Located in Section 18 of Burr Oak & Section 13 of Freemont Township, Winneshiek County, Iowa  
USDA Farm No. 8485 Tract 7151, Fields 1, 4, 5 according to FSA farm map.

**Possession:** March 1, 2020



## JOHN F. DYBVIK RESIDUARY TRUST

First Citizens Bank – Trustee | Mike Midtgaard – Trust Officer | Collin M. Davison – Attorney

For information contact Nate Larson of Steffes Group, 641.423.1947 or 641.530.5528

# SteffesGroup.com

Steffes Group, Inc., 2245 East Bluegrass Road, Mt. Pleasant, IA 52641 | 641.423.1947

**516±**  
acres offered in  
**2 Tracts**

Winneshiek County, Iowa

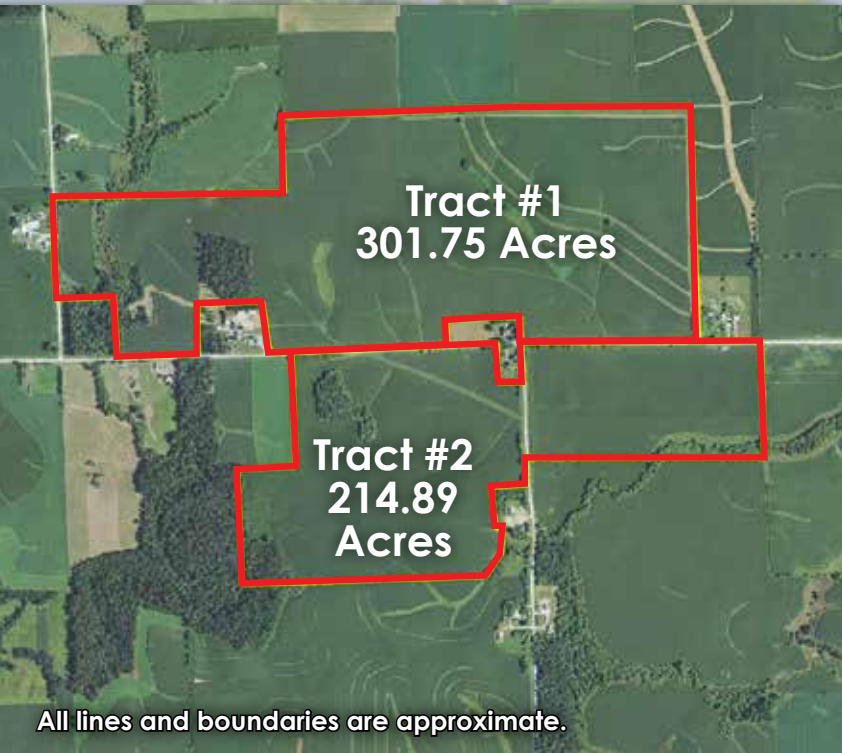
Timed Online

# LAND RENT AUCTION

**DECORAH, IOWA** - Land is located 10 miles north of Decorah on Highway 52, then 5 miles west on County Road A18, then 2 miles north on 288th Ave., then 1/2 mile west on County Road A14.

**A rare opportunity to increase the size of your farming operation.** Over 516 acres of land up for cash rent in this timed online auction.

This online auction will have a 5% buyer's premium per tract.  
The 2 year lease agreement will be posted online for review as soon as they are available. Complete terms and conditions will be stated within the contracts.



All lines and boundaries are approximate.

For detailed information, maps and complete terms and conditions visit **SteffesGroup.com**



2245 East Bluegrass Road  
Mt. Pleasant, IA 52641

PRSTD MKTG  
US POSTAGE  
**PAID**  
PERMIT #315  
FARGO, ND